



Mobile Diesel Powered Hot Washer



Model NDHM.30



Bites into your Dirt

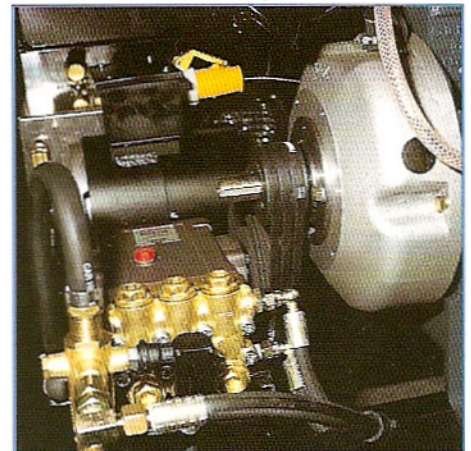
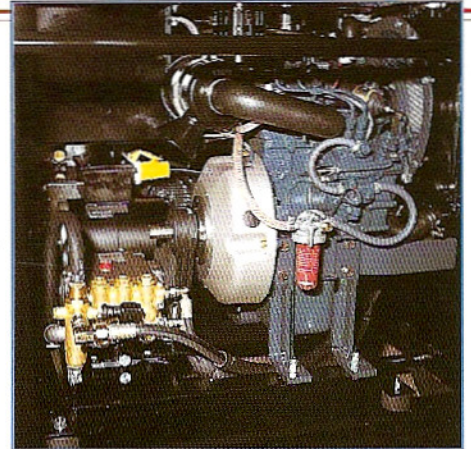
Mobile Diesel Powered Hot Washer

Design Features

- **Chassis** constructed from Heavy Duty Zintec Box Section with Stainless Steel Covers and painted mesh side panels
- Twin Axle with Inflatable Tyres for ease of manoeuvrability
- **Stainless Steel** Water tank
- **Zintec** Fuel Tank
- Engine & Heater Coil independently mounted on anti vibration pads
- Generates its own 110 Volt power for the burner system

Specification

- 200 bar (3000 psi) at 18 litres per minute
- **Kubota** Twin Cylinder Water Cooled 12.5 HP Continually Rated Diesel Engine
- Positive displacement **Hawk** Plunger Pump
- Triple V Belt Drive - Single screw adjustment
- Double Wound Vertical Coil
- Purpose built 110 Volt 1450 rpm Generator
- Low Pressure Steam Stage
- Low Pressure Detergent Injection
- 16 metre Twin Wire 3/8" High Pressure Hose
- Temperature 80/120 degrees C
- **Dimensions:**
151cm long x 115cm wide x 117cm high



**Model
NDHM.30**

Manufactured for and distributed by: