



Trailer Mounted Diesel Powered Hot Washer

Tel: (01278) 785425 / 789844

Fax: (01278) 780790 / M-576 (0632) 978382



Model NDHM.30/ST



Bites into your Dirt

Trailer Mounted Diesel Powered Hot Washer with 600L Capacity Water Tanks

Trailer Specification

- Heavy Duty Galvanized Chassis
- Two 300L Baffled Polyethylene Water Tanks – Inter Linked
- Fast Drain Valve
- 1800kg Rated Running Gear
- Lockable **Tow Hitch**
- Lighting Board to EEC Specification
- HD Galvanized Hose Reel with Stainless Steel Shaft

Machine Specification

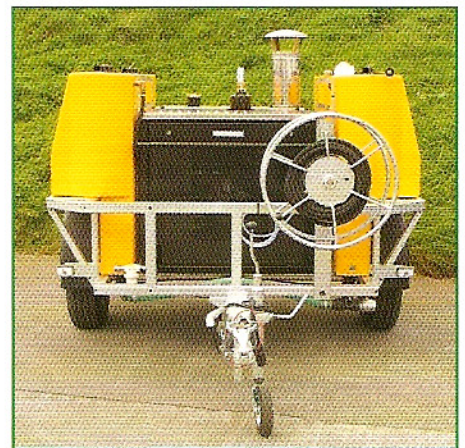
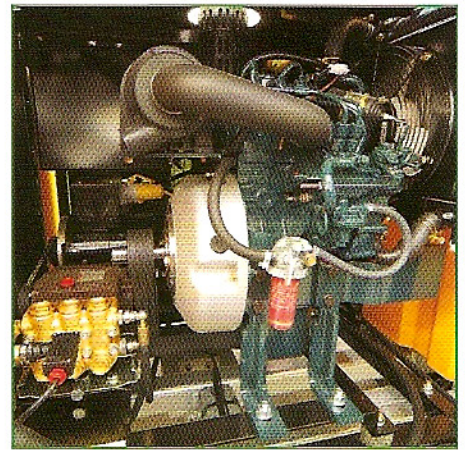
- **Kubota** Twin Cylinder Water Cooled 12.5 HP Continually rated Diesel Engine
- Positive displacement **Hawk** Plunger Pump 200 bar (3000psi) at 18 litres per minute
- Double Wound **Vertical Coil**
- Engine & Water Heater Coil independently mounted on Anti-Vibration Pads
- Purpose built **110 volt Generator**
- Triple V Belt Drive – Single Screw Adjustment
- Low Pressure Steam Stage
- Low Pressure Detergent Injection
- 16M Twin Wire $\frac{3}{8}$ " High Pressure Hose
- Temperature - 80/120 degrees C

Dimensions

- 302cm long x 187cm wide x 173 cm high

Weight

- Unladen 800kgs
- Laden 1550kgs



Manufactured for and distributed by:

Demonstration without obligation

We reserve the right to amend specification of our equipment and accessories without prior notification.